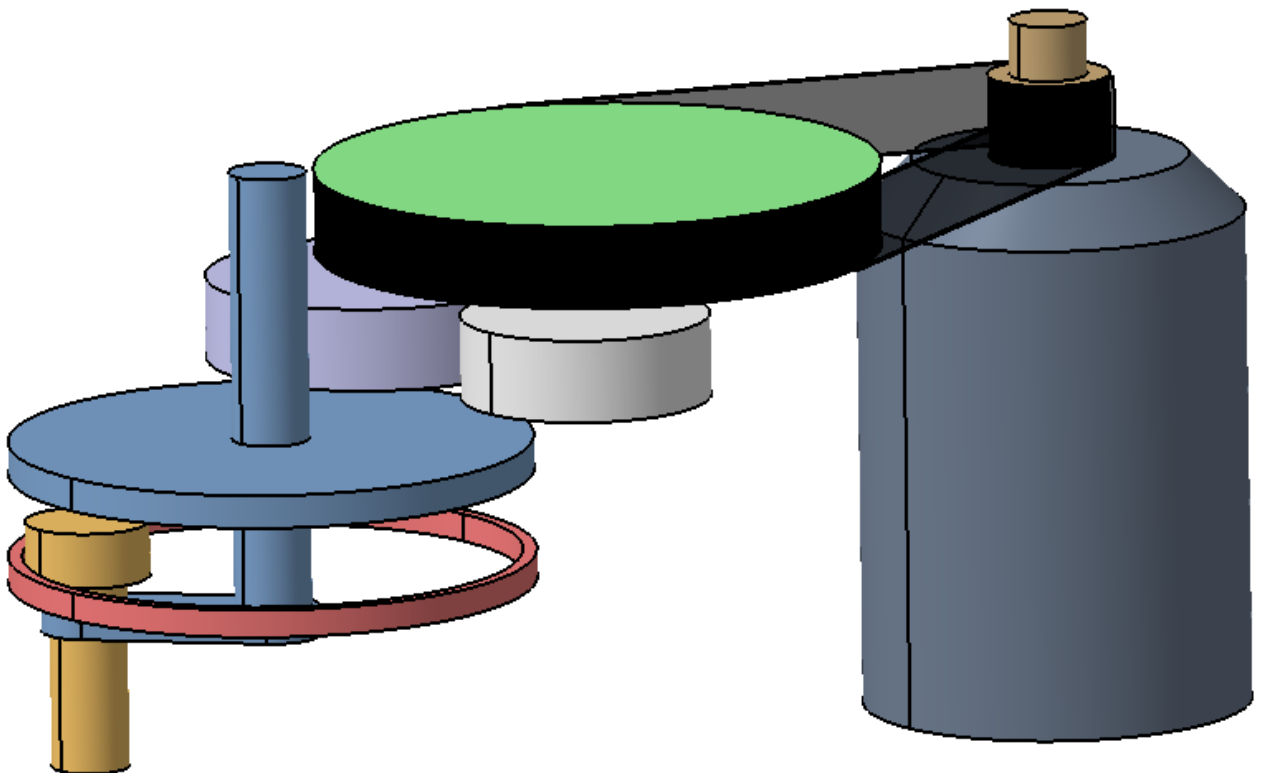
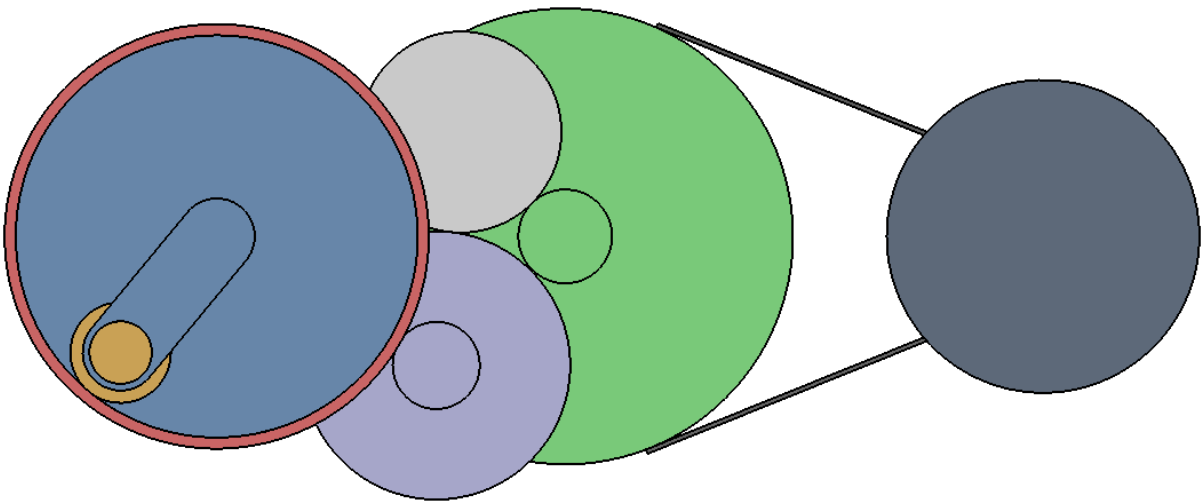
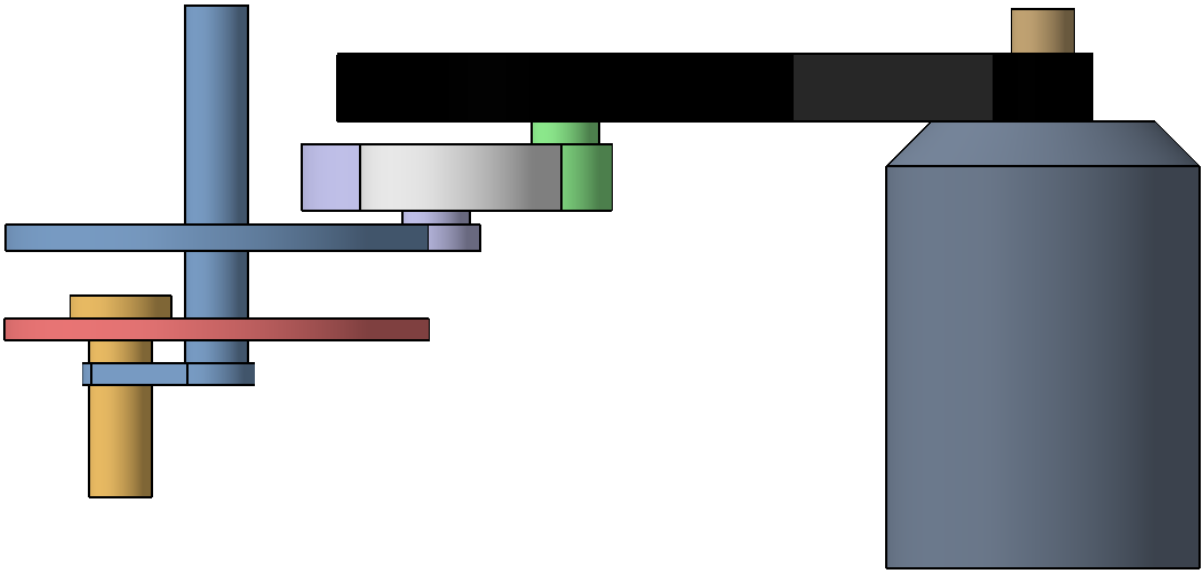
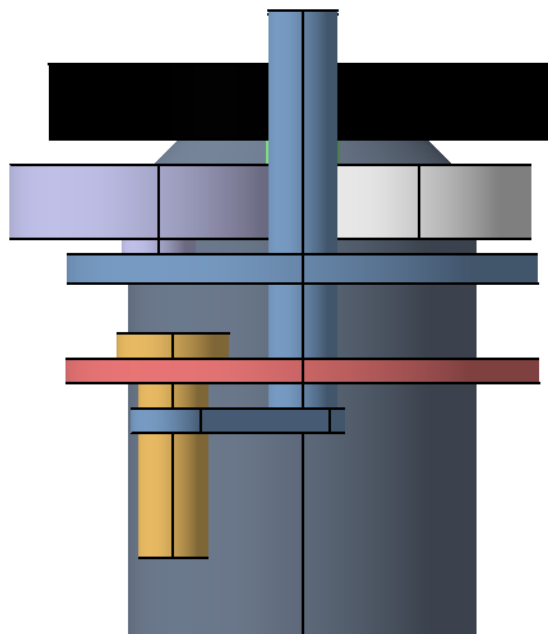
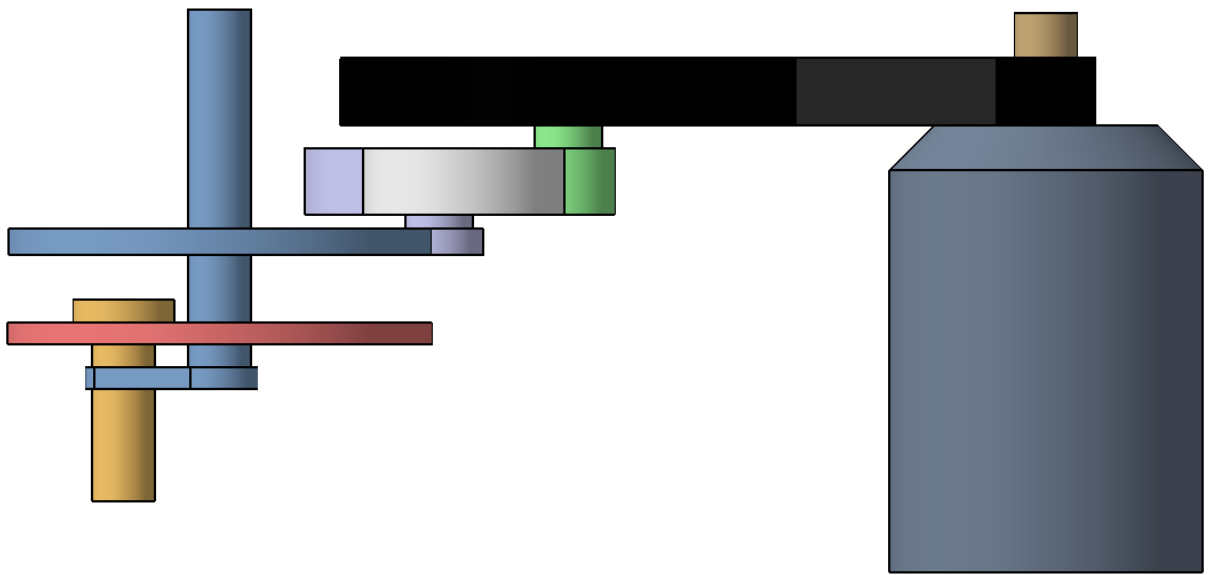
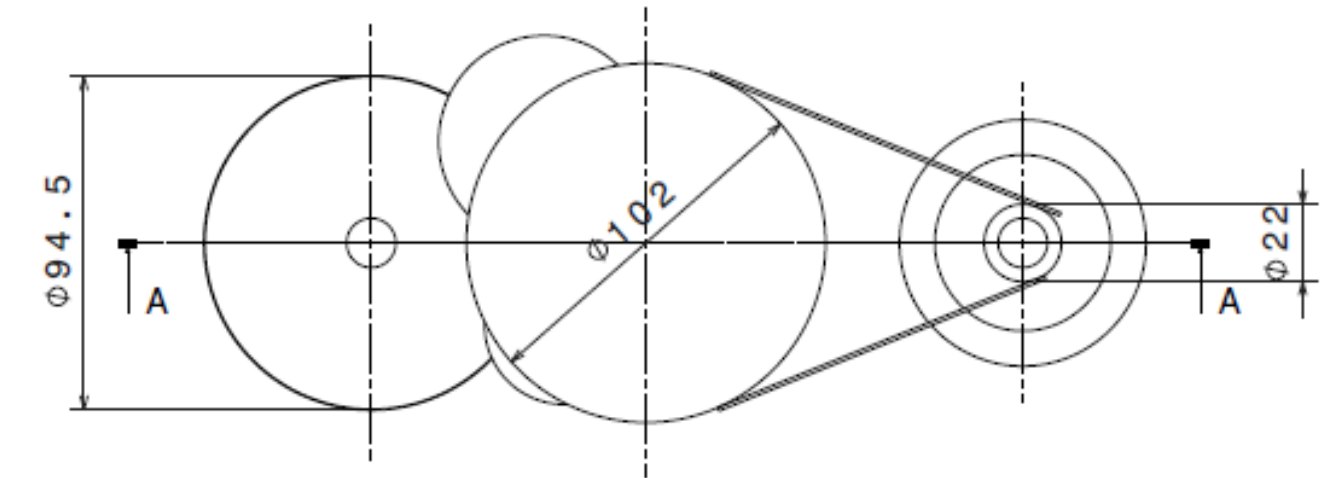
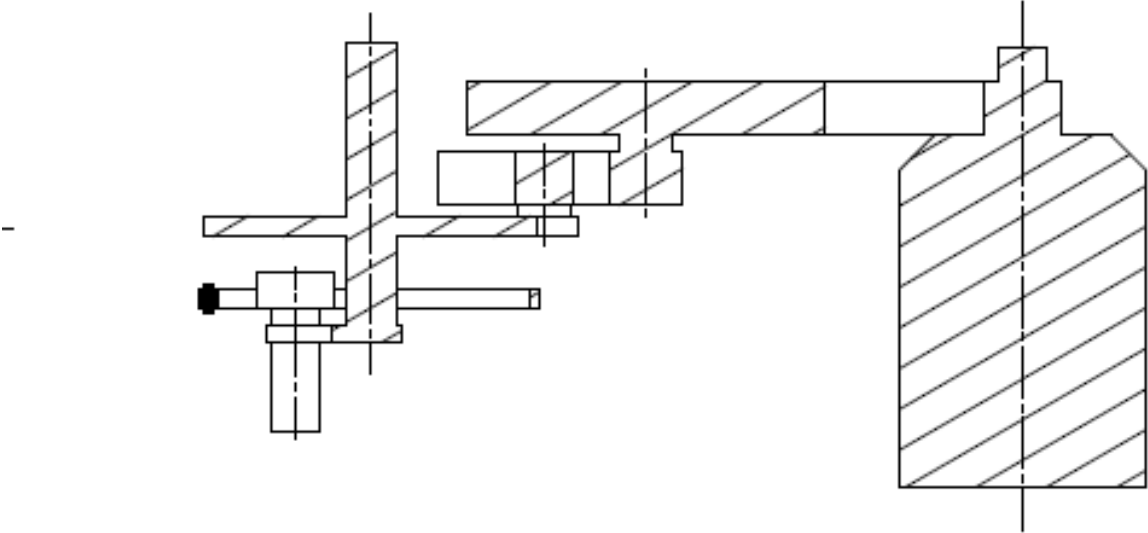
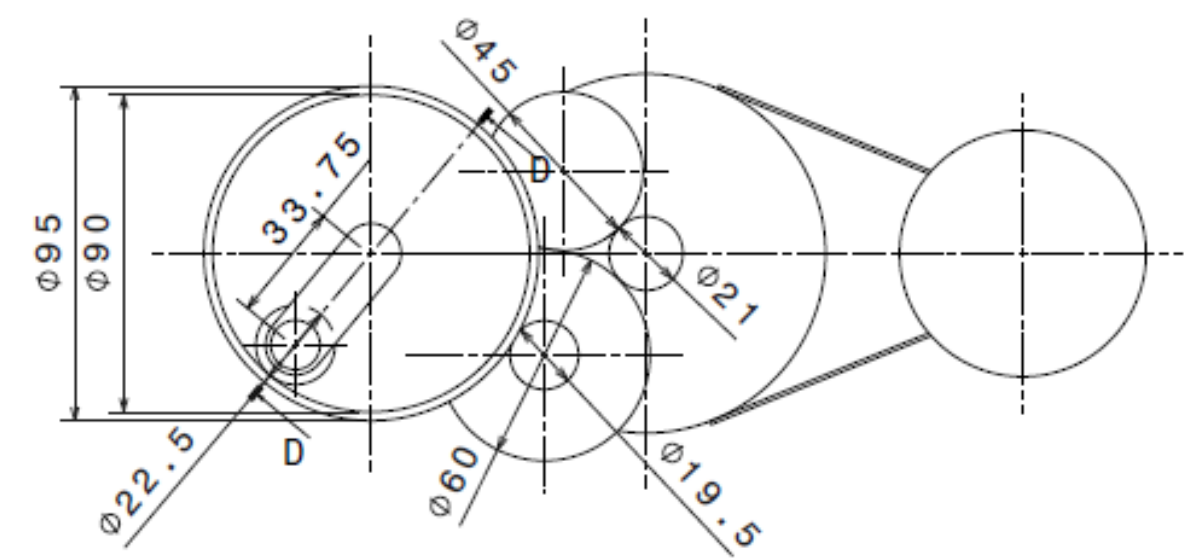


Anwendungsbeispiel: Rührgerät









Stirnräder aus Polyketon (PK)

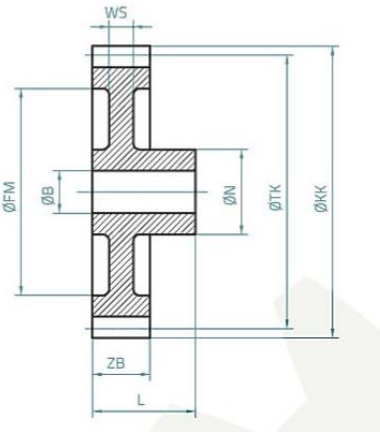
Modul 1,5

Ausführung: geradverzahnt, gespritzt, Eingriffswinkel 20°, Bohrung spanabhebend bearbeitet.
Maßänderung vorbehalten.

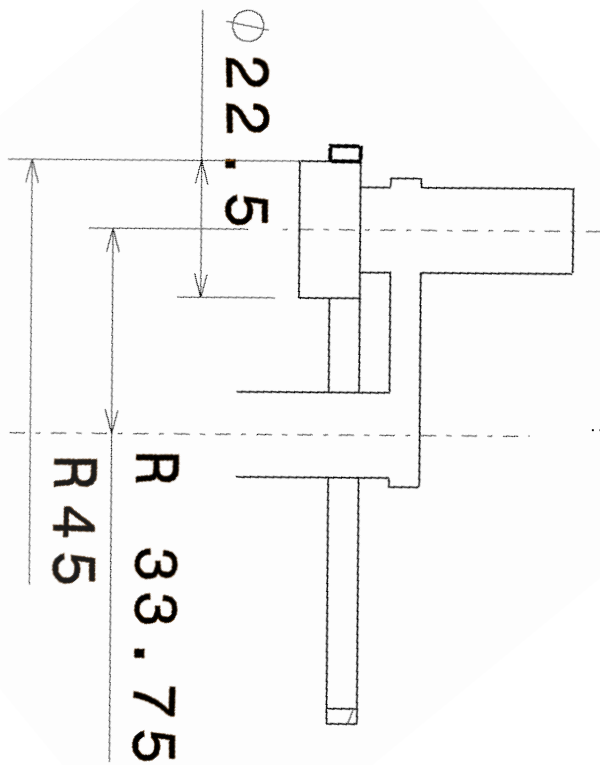
ZZ	ZB	ØB	ØTK	ØKK	ØN	L	ØFM	WS	G	DM**	Art.-Nr.
[mm]	[mm]	[mm]	[mm]	[mm]	[mm]	[mm]	[mm]	[mm]	[g]	[Ncm]	
12	12	6	18	21	14	23	–	12	5,08	53,43	SPK1512PK
13	12	6	19,5	22,5	14	23	–	12	5,51	57,89	SPK1513PK
14	12	6	21	24	14	23	13*	10,5	6,23	62,35	SPK1514PK
15	12	6	22,5	25,5	14	23	16*	10,5	7,09	66,8	SPK1515PK
16	12	6	24	27	14	23	16*	10,5	7,79	71,25	SPK1516PK
17	12	6	25,5	28,5	14	23	16*	10,5	8,71	75,71	SPK1517PK
18	12	8	27	30	17	23	18,5*	10,5	9,67	80,16	SPK1518PK
19	12	8	28,5	31,5	17	23	18,5*	10,5	10,79	84,61	SPK1519PK
20	12	8	30	33	17	23	22,5*	9	11,29	89,06	SPK1520PK
21	12	8	31,5	34,5	17	23	22,5	5	11,73	93,51	SPK1521PK
22	12	8	33	36	17	23	22,5	5	12,86	97,98	SPK1522PK
23	12	8	34,5	37,5	17	23	22,5	5	13,88	102,43	SPK1523PK
24	12	8	36	39	19	23	26,5	5	15,24	106,88	SPK1524PK
25	12	8	37,5	40,5	19	23	26,5	5	17,02	111,33	SPK1525PK
26	12	8	39	42	19	23	26,5	5	17,86	115,78	SPK1526PK
27	12	8	40,5	43,5	19	23	25,5	5	19,66	120,24	SPK1527PK
28	12	8	42	45	19	23	25,5	5	21,09	124,69	SPK1528PK
30	12	10	45	48	24	23	33,5	5	23,48	133,59	SPK1530PK
32	12	10	48	51	24	23	33,5	5	27,08	142,51	SPK1532PK
35	12	10	52,5	55,5	24	23	41,5	5	28,58	155,86	SPK1535PK



Abbildung beispielhaft



<https://www.zipperle-antriebstechnik.de/produkt/spk15xxpk/>





ErsatzteilDIRECT.de ©

Kenwood Küchenmaschine Motor Km080 Km090 Km098 020

Kenwood Küchenmaschinen Antriebsmotor 230V 50Hz.
700W / 3,4A inkl. Lüfterrad und Kupplung, 9000

Umdrehungen /Minute Verwendbar für:

KM080KM082KM083KM084 KM085 KM086 KM089

KM092 KM094 KM096 KM098 KMC...

 Lieferzeit: 2-4 Wochen

★★★★★ (13)

74,90 EUR

inkl. 19 % MwSt. zzgl. Versandkosten

